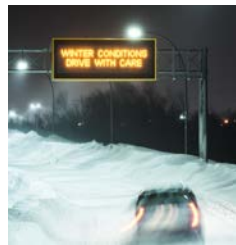


PMA's Organizational Safety Institute

Schedule of Learning Events

PMA's Organizational Safety Institute is a place where you can learn "virtually" about some of the emerging best practices in leading safety efforts that reduce the total cost of risk for your organization. We welcome any feedback you have to make our programs even better! Send an email to us at heretohelp@pmagroup.com. To register for an upcoming session(s), click on the title/link below or visit <http://webservice.pmagroup.com>.



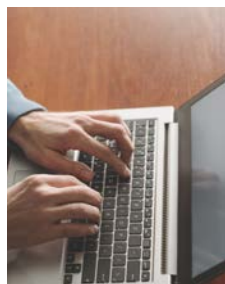
January 15, 2019 – 10:30 AM (EST), 9:30 AM (CST) – Duration: 60 minutes
Strategic Planning and Winter Storm Management for Public Entities
Session Leader: Ken Child, Risk Control Specialist

The next big Winter storm may not strike until next month, or it might happen this weekend. Do you have a plan for responding to the impacts of the next big storm? This session will review the need for a comprehensive, but flexible plan of attack including: Accurate "Local" Forecasts, Priority Routes and Areas Based on Needs and Exposures, Driver Preparedness, Equipment Preparedness, Managing Driver Fatigue, and Proper Documentation.



January 17, 2019 – 10:30 AM (EST), 9:30 AM (CST) – Duration: 60 minutes
PMA Webservice, Your Link to PMA's Risk Control Solutions
Session Leader: Marcy Barker, Senior Risk Control Services Coordinator

PMA Webservice® provides online access to PMA Risk Control's growing offering of safety resources. Find answers to common risk management questions in our articles, technical bulletins, and white papers or learn how you can join one of the Instructor-led Sessions hosted by our Organizational Safety Institute. This orientation to our online resources will also provide information on how to request a safety DVD for employee training, or simply link to one of many leading safety websites to build your own knowledge of important issues. This session is ideal for new clients but existing customers may be surprised at what they learn about our growing online resources.



January 24, 2019 – 10:30 AM (EST), 9:30 AM (CST) – Duration: 60 minutes
Completing OSHA Form 300A: A Practical Workshop
Session Leader: Brent Gates, Risk Control Consultant

Employers are required to complete and post OSHA Form 300A (*Summary of Work-Related Injuries and Illness Report*) from February 1 – April 30 of each year, summarizing their prior year's results. This interactive session will help you understand the key requirements of completing this form and provide you with insights on how you can use this information to engage your organization with relevant benchmarking information for your industry. A brief review of OSHA recordability and recent updates to OSHA Recordkeeping requirements will also be provided. *Repeat event – highly recommended – updated annually.*



February 14, 2019 – 10:30 AM (EST), 9:30 AM (CST) – Duration: 60 minutes
New Employee Safety Onboarding: New Thoughts and Approaches Are Needed
Session Leader: Ken Nogan, Senior Risk Control Specialist – Learning and Development

According to the BLS Data, over 30% of *lost time* injuries occur to employees with less than one year on the job. A recent PMA study of large losses revealed nearly 25% of these injuries were to first year employees! This challenging area of safety has been remarkably persistent over the years, so it has become increasingly obvious that some new thoughts and approaches must be considered. Expect a discussion centered around some of the obstacles to “new employee learning,” assessing their safety performance in key areas and the need for organizational performance monitoring in this area. This session will also be a great place to bring your unique challenges and safety onboarding questions.



February 21, 2019 – 10:30 AM (EST), 9:30 AM (CST) – Duration: 60 minutes
Safety Culture: Why it Matters and What You Can Do About It
Session Leader: Ken Nogan, Senior Risk Control Specialist – Learning and Development

Take a surprisingly deep and insightful look at culture formation by examining key findings from business, organizational leadership and safety management literature regarding safety culture. Although this is an admittedly complex issue, one factor all the literature points to is the impact of decision-making as a key determinant of culture formation. This is a great session to get you thinking about what you can do to impact your safety culture and to help every level of your organization see culture as something that can be changed. Whether you view this issue as a new frontier or your last hurdle to clear towards safety excellence, this session will help you form your next steps.



March 14, 2019 – 10:30 AM (EST), 9:30 AM (CST) – Duration: 60 minutes
Need Safety Training for Your Supervisors – Take These Three Actions First to Maximize Your Outcomes
Session Leader: Ken Nogan, Senior Risk Control Specialist – Learning and Development

You are convinced the supervisory level of your organization needs training or education in the area of safety to strengthen the commitment of your organization to the safety of everyone. But before you rush into finding materials or an outside resource, take the time to assess this need more closely, including your organization’s readiness to promote and sustain a higher level of safety leadership at this level of your organization. This session will help you by walking you through three common levels of preparing for training (Pre-Training, Training and Post Training.) This session will be marked by a blend of practical and insightful guidance that can benefit most organizations.



March 21, 2019 – 10:30 AM (EST), 9:30 AM (CST) – Duration: 60 minutes
Benefits and Overcoming the Challenges of a Limited Lift Program
Session Leader: Brent Morgan, Senior Risk Control Specialist

“Limited Lift” has been defined in many ways, but the ultimate goal for any program of this type is to minimize manual resident handling activities which have accounted for as much as 90% of all related losses in the healthcare industry. This session provides insights into the benefits of implementing a Limited Lift Program while highlighting some potential challenges, and possible solutions, an organization should consider when attempting to impact the leading cause of loss frequency/severity in the nation’s largest industry. *This discussion is centered primarily in the long-term care area of healthcare.*

For additional information, please contact your PMA Risk Control Consultant or:

PMA Companies Corporate Risk Control • 380 Sentry Parkway, Blue Bell, PA 19422-0754 • 800.222.2749, ext. 5025

